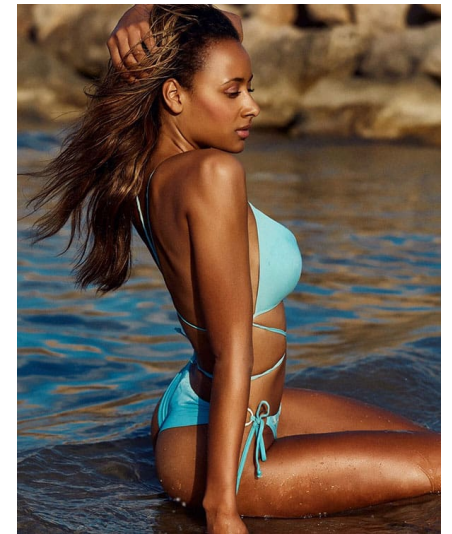
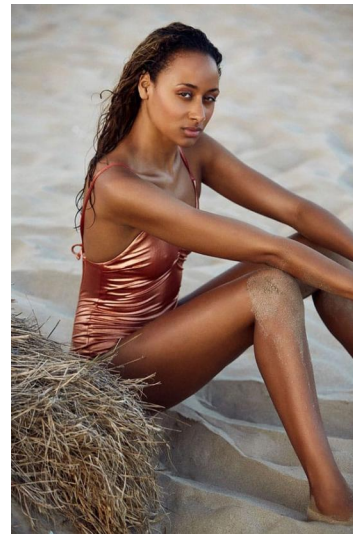
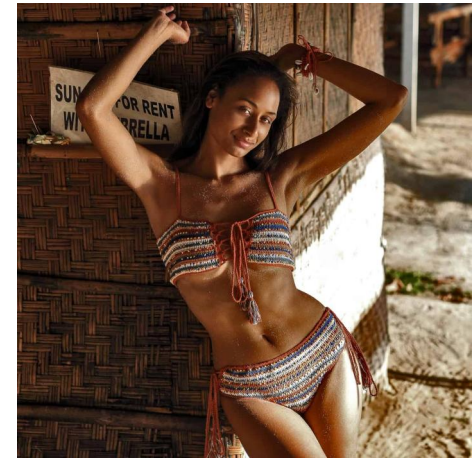


BALI MODEL AGENCY



JASMINE S

Height: 179 cm Bust: 89 cm Waist: 70 cm Hips: 91 cm
Shoe: 41

Jalan Pantai Pererenan 98B Pererenan, Mengwi, Bali 80351, Indonesia
+62(0)81338384715 | contact@balimodelagency.com